

MEET ME AT THE EMILY

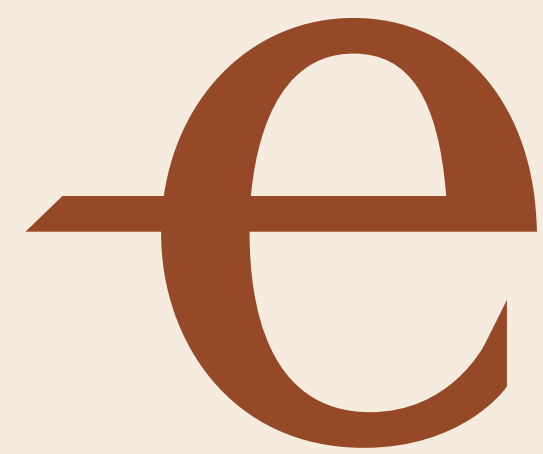
the
emily
hotel



chicago | emilyhotel.com | @theemilyhotel



the emily hotel



ABOUT THE EMILY

Inspired by art and rooted in nature, The Emily Hotel is an independent boutique hotel located in the heart of Chicago's Fulton Market. With 159 comfortable, modernist rooms and design forward spaces featuring a curated collection of art from near and far, The Emily is a place for locals and visitors alike to collaborate, celebrate and feel inspired. We're home to 8,000 sq ft of unique event space and a collection of culinary and experiential destinations including Fora, Selva, Sushi by Bou and Rooftop Cinema Club.

For more information about The Emily, visit emilyhotel.com or follow along on social at [@theemilyhotel](https://www.instagram.com/theemilyhotel).





SLEEP

Rest your head after a day in Chicago with our collection of 159 modern minimalist rooms and suites. Your stay includes complimentary Wi-Fi and 24hr gym access. Plus, we're pet friendly!

IN-ROOM AMENITIES

- organic, biodegradable and sustainable latex mattresses
- clean, cruelty-free Malin + Goetz amenities
- spa-inspired rain showers
- handheld clothing steamer
- cozy robes
- mini bar featuring a selection of classic favorites and locally-made beverages and snacks
- hot water kettle
- eco-friendly specialty single-serve Steeped coffee
- premium organic Rishi tea
- two complimentary cans of carbon neutral, Open Water[®]
- flat screen televisions and bluetooth radios
- in-room safe
- premium Wi-Fi available for a fee

ROOMS

STANDARD KING	290 sq.ft.	1 King Bed	1Bath	Sleeps 2
DELUXE KING	315 sq.ft.	1 King Bed	1Bath	Sleeps 2
DELUXE DOUBLE	335 sq.ft.	2 Dbl Beds	1Bath	Sleeps 4
EXECUTIVE KING	400 sq.ft.	1 King Bed	1Bath	Sleeps 2
ACCESSIBLE DELUXE DOUBLE	335 sq.ft.	2 Dbl Beds	1Bath	Sleeps 2
ACCESSIBLE STANDARD KING	290 sq.ft.	1 King Bed	1Bath	Sleeps 2

SUITES

LOFT SUITE	545 sq.ft.	1 King Bed	1Bath	Sleeps 4
EXECUTIVE LOFT SUITE	700 sq.ft.	1 King Bed	1Bath	Sleeps 4
EMILY SUITE	864 sq.ft.	1 King Bed	1Bath	Sleeps 4



MEET ME AT THE EMILY

At The Emily, we are proud to orchestrate collaboration, celebration and innovation. With more than five distinctive and versatile spaces, let our team help you find the right canvas for your vision. Welcome up to 210 guests for a reception in the Burroughs room. Host a screening in The Park for up to 250 spectators. Invite 120 friends and family to dance the night away in Selva, our vibrant lounge reminiscent of Mexico by night. Alternatively, make a toast in Fora, where 80 guests can raise a glass.

the emily hotel



GATHER



ROOM NAME	SQUARE FEET	CEILING HEIGHT	OCCUPANCY (STANDING)	CLASSROOM	THEATRE	CONFERENCE	U-SHAPE	ROUNDS 8	ROUNDS 10	RECEPTION
BURROUGHS	1992 sq ft			130	221	82	71	-	140	210
GALLERY	1354 sq ft			-	-	-	-	-	-	120
CARR	1235 sq ft			81	136	-	-	96	-	114
LUSK	1657 sq ft			112	168	-	-	152	-	150
THE PARK (OUTDOOR)	2876 sq ft				250	-	-	-	200	337
FORA INSIDE		9'	196							
FORA PATIO		-	124 (85 SEATED)							
SELVA EAST BAR		9'	119							
SELVA EAST TERRACE		-	50							
SELVA WEST BAR		9'	80							



GATHER

GALLERY

The Gallery is intentionally constructed with natural light and captivating corners to welcome your guests with open arms. This pre-function space sets the stage for the journey that lies ahead.

CARR

Similar to a blank canvas, the possibilities are endless when it comes to collaboration and imagination in the Carr space. Night or day, floor-to-ceiling windows allow the sunlight or city lights to pour through the room and illuminate all corners.

BURROUGHS

With a functional and adaptable layout, this venue can accommodate a wide range of gatherings. The room allows for sunlight to filter through expansive ceiling windows. Named in honor of the pioneering visionary, artist, and activist Margaret Taylor Burroughs, who laid the foundation for the DuSable Museum of African American History, this room salutes to her legacy.

THE PARK

A tribute to the painting Beacon Hill Park, The Park is a rooftop open-air space on the sixth floor of the hotel that aims to provide an urban oasis.

LUSK

Lusk offers ample space for conversation with the flexibility to host both an engaging classroom discussion or a charming exhibit. The space receives its name from Marie Koupal Lusk, who co-founded the Palette Club in 1882, an underground art association in Chicago strictly for female artists.



EAT, DRINK & PLAY

24hr Fitness Center

Fora Restaurant

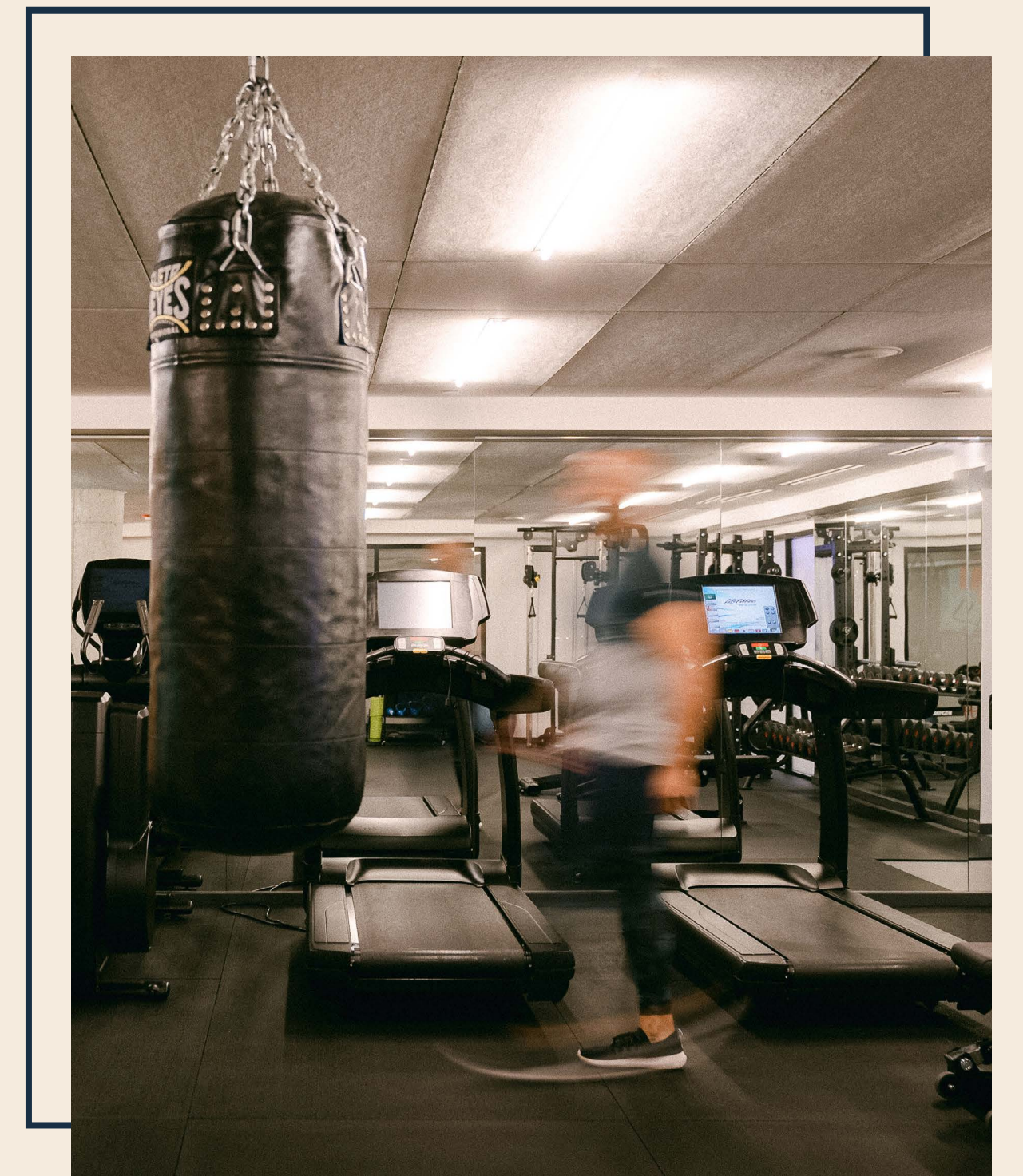
Selva Cocktail Lounge

The Coffee Bar

Sushi by Bou

Rooftop Cinema Club (Seasonal)

Stone's Throw Curling (Seasonal)





FORA

Located on the Lobby Level of the hotel, Fora radiates an aura of refined sophistication. Set the tone for an intimate toast within the private dining space, plan an exclusive al fresco soirée on our patio or host up to 196 guests for a full restaurant buy-out.

For more information, follow [@forachicago](#) on Instagram, [@forarestaurantchicago](#) on Facebook and visit [forachicago.com](#).

For group sales inquiries, please connect with us at sales@theemilyhotel.com.



Cocktail Bar

at The Emily Hotel

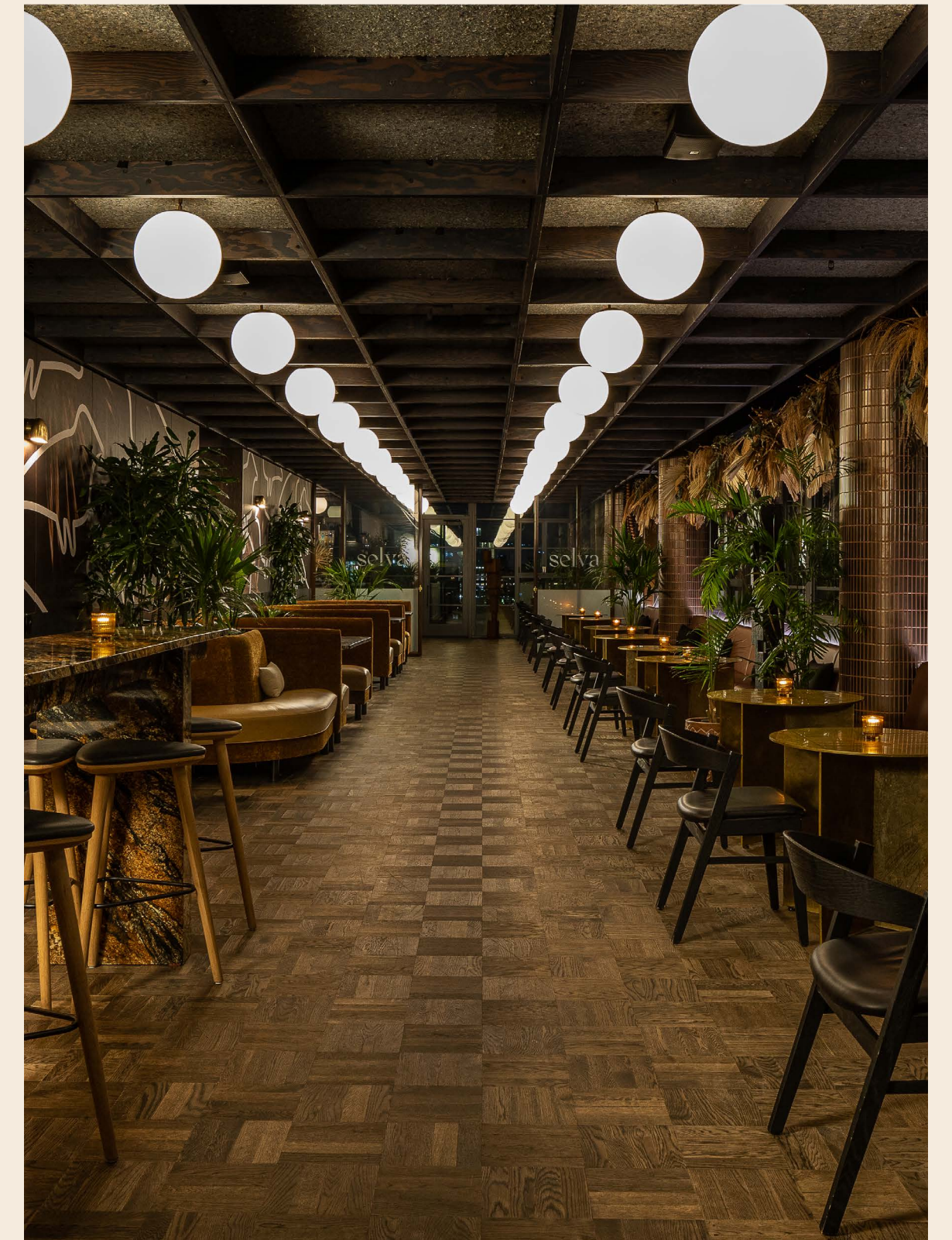
selva



Located on the seventh floor, Selva is a cocktail lounge inspired by the energy of Mexico by night. Named after the Spanish word for "jungle", Selva's intimate space and shimmering chandeliers invite you to live in the moment. With an abundance of indoor and outdoor spaces to choose from, Selva is yours to explore. Group capacity up to 119 people.

For more information, visit selvachicago.com or follow on social [@selvachicago](https://www.instagram.com/selvachicago).

For event inquiries, please connect with us at sales@theemilyhotel.com.



the emily hotel





THE COFFEE BAR

Located on the lobby level of the hotel, join us daily at The Coffee Bar for locally roasted Sparrow Coffee, fresh baked pastries from cult-favorite Dan the Baker, and a selection of housemade café items.

SUSHI BY BOU

Sushi By Bou pays homage to the Hip Hop Era of the '90s, with graffiti-covered walls, dedicated playlists and murals of Chicago Hip Hop legends. The 10 seat lounge offers a timed Omakase experience.

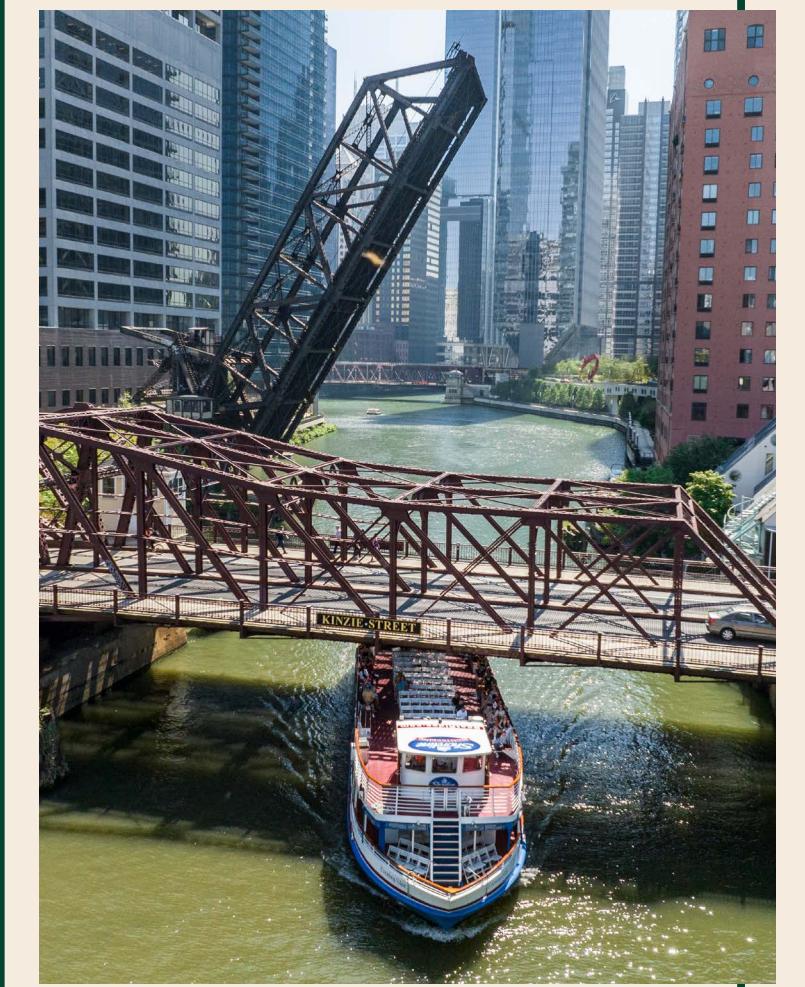
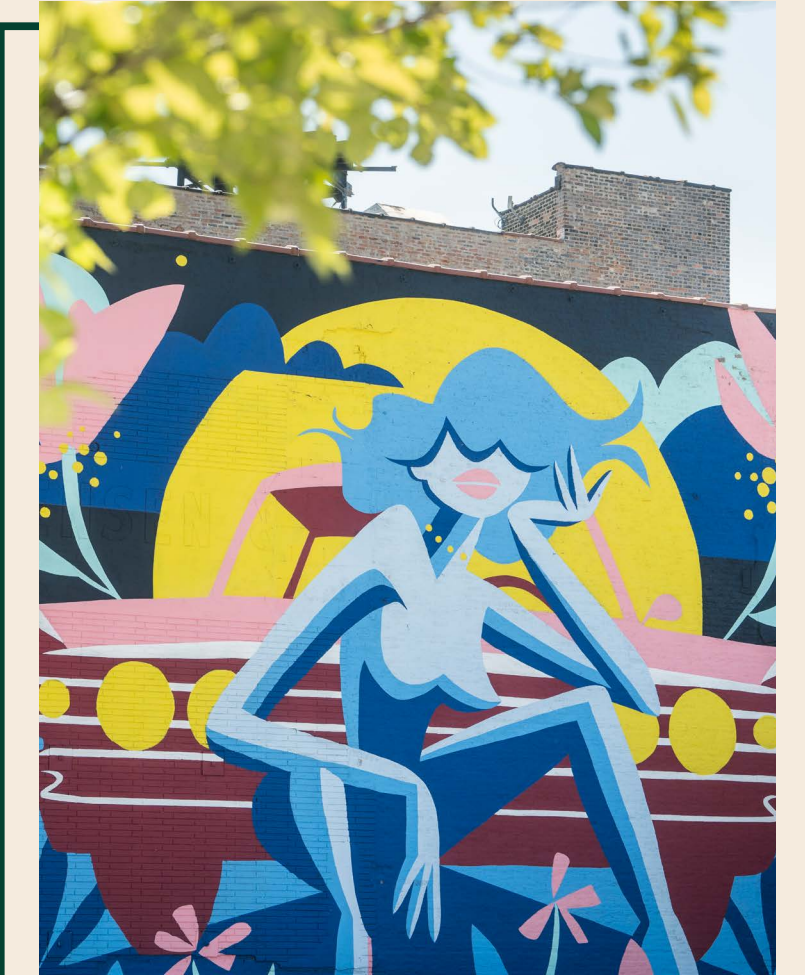
For more information, follow [@sushibybou_](#) on Instagram and Facebook and visit [sushibybou.com](#).



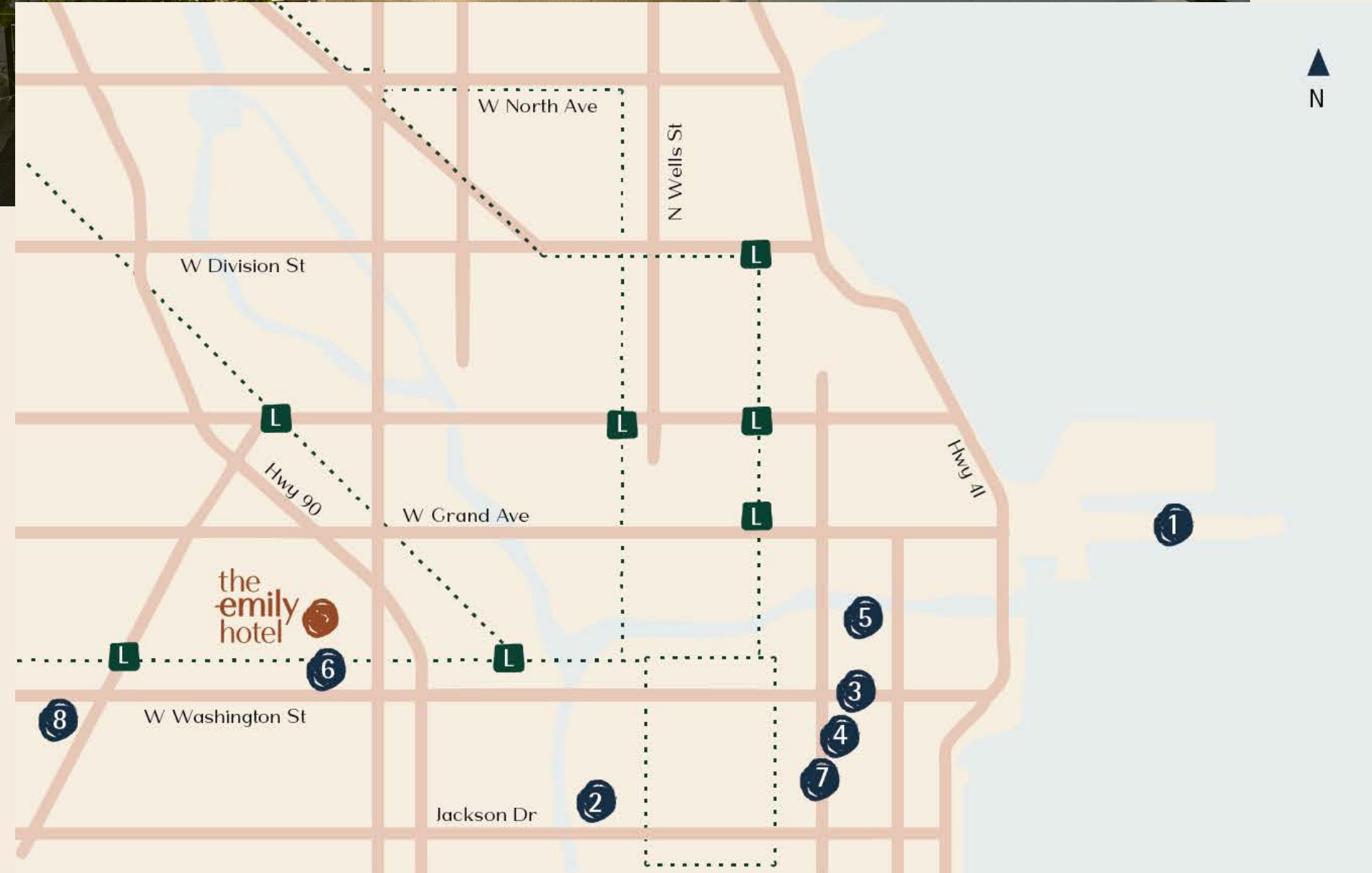


CULTURE + NEIGHBORHOOD

Located in Chicago's Near West Side, known for converted industrial buildings, The Emily is perfectly placed in the middle of a great restaurant scene and a growing hub for corporate headquarters. The West Loop's Fulton Market District, which once served as the city's meat-packing and warehouse district in the 19th and 20th centuries, is now home to some of the city's most celebrated dining, where world-class chefs and food entrepreneurs dish up a diverse range of culinary experiences. Beyond food, the district is a hub for artistic expression, with galleries, street art and live performances contributing to its creative vibrancy.



the emily hotel



- L** CTA Station - 'L' Train
- 1** Navy Pier
- 2** Willis Tower
- 3** Millennium Park
- 4** Cloud Gate (aka Chicago Bean)
- 5** Riverwalk
- 6** Fulton Market - Restaurant District
- 7** The Art Institute of Chicago
- 8** United Center



ROOFTOP CINEMA CLUB

Located on the fifth floor terrace of the hotel, this one-of-a-kind outdoor cinema experience features a weekly line up of cult-classic films and timeless favorites viewed on a state-of-the-art LED screen with wireless headphones. Arrive early, play outdoor games with friends and enjoy a playful menu of casual bites and a summer beverage list from Selva. 192 seated capacity.

rooftopcinemaclub.com

STONE'S THROW

Stone's Throw at The Emily Hotel features four curling courts, a curated menu of winter beverages & snacks and limited-edition Stone's Throw merchandise sure to ignite your 80s nostalgia. Located on the fifth-floor terrace of the hotel, this outdoor experience even has heated yurts, perfect for cozying up pre- or post-curling with a warm cocktail.

Learn more at emilyhotel.com.

the emily hotel





NATURE + SUSTAINABILITY

While many of us live in cities, we all yearn to be in nature. Despite our urban location, The Emily Hotel takes pride in integrating natural elements into our spaces. Homegrown ingredients, such as strawberries, from our very own rooftop garden and honey, harvested in partnership with Roof Crop, are used thoughtfully in our culinary creations. Locally sourced products are featured throughout our guestrooms and outlets. Aluminum water bottles are at your finger tips upon arrival. We make a healthy, balanced lifestyle a priority and strive to make sustainable choices - reminding us that nature is crucial to our well-being and peace of mind.

*ART CAN CHANGE
THE WAY WE LOOK
AT THE WORLD*

INVITING ART

the emily hotel

The Emily is inspired the belief that art can change the way we look at the world. We invite our guests to experience a sense of place by celebrating a diverse collection of local artists and mindfully weaving art into the guest experience through our public spaces, brand touchpoints and in our events, activations and partnerships.



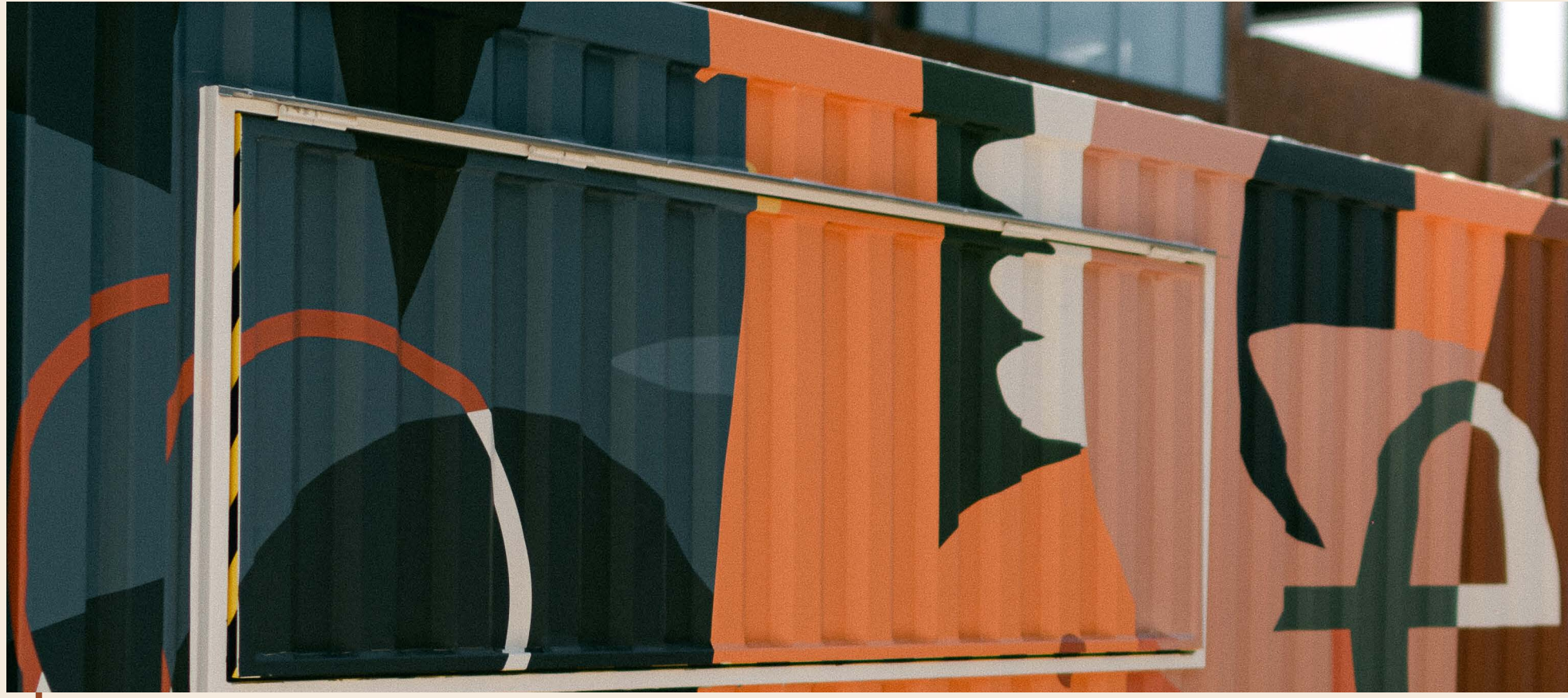
LOCAL COLLABORATION

RASPY RIVERA

Amanda Rivera-Redic, a Puerto Rican actress and artist known as Raspy Rivera due to her warm radio voice, rediscovered her passion for drawing and painting during the pandemic after a fall left her temporarily immobilized for eight weeks. This forced slowdown sparked a desire to share her art, and she began collaborating with The Library at Soho House Chicago in March 2021, focusing on Women's History Month.



Raspy's artwork celebrates individuality, with each piece being distinct, and she hopes viewers can connect with the imperfect faces she creates and appreciate the beauty of their own uniqueness.



EMMY STAR BROWN

Emmy, a Chicago native, draws inspiration from the city's one-of-a-kind style and character for her creative career. She began with a BFA in visual communications from the Illinois Institute of Art and worked in advertising before becoming an independent artist. Over the past decade, she's adorned public spaces in Chicago and beyond with her diverse artistic skills, including illustration, lettering, canvas work, branding, packaging, and murals. Emmy has collaborated with brands like Sharpie, Chicago Bulls, Lululemon, and more – partnerships that have spotlighted her extroverted and introspective signature style that employs fresh colors, layering, and emotive line work. Her art has been showcased in notable locations like Times Square and Miami's Wynwood Art District. Currently, her studio work revolves around the Inner Child concept, capturing the joy and creativity of youth.

